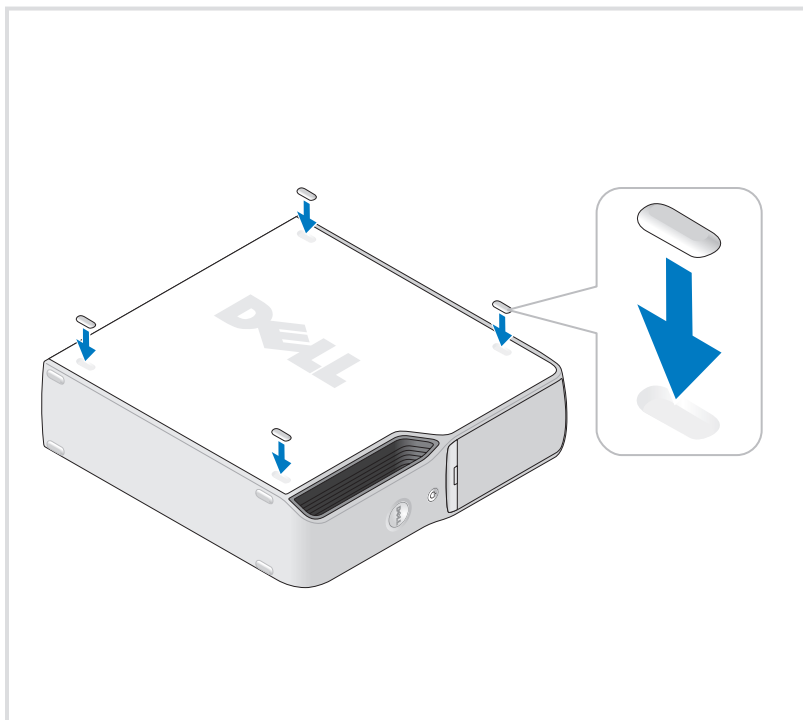




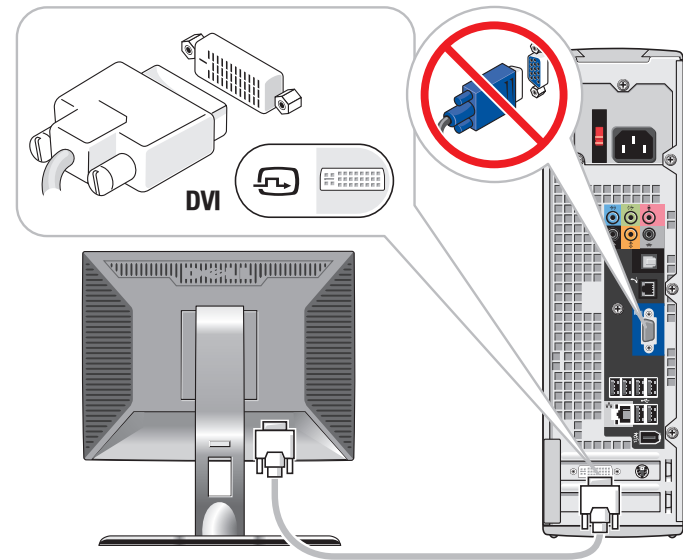
# Setting Up Your Computer

**CAUTION:**

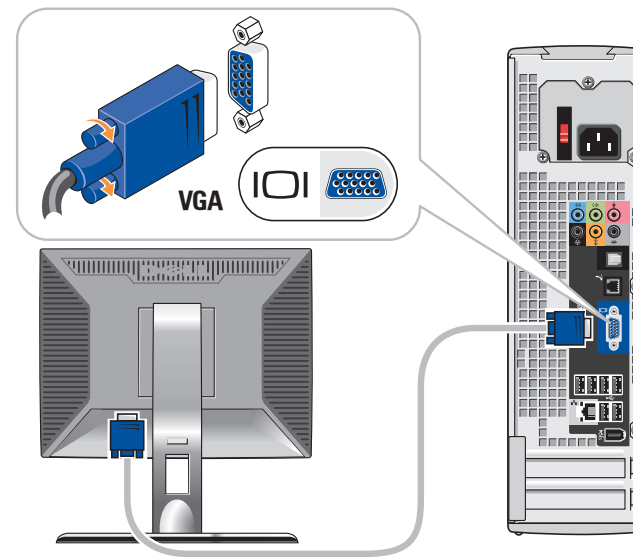
Before you set up and operate your Dell™ computer, see the safety instructions in your *Product Information Guide*.



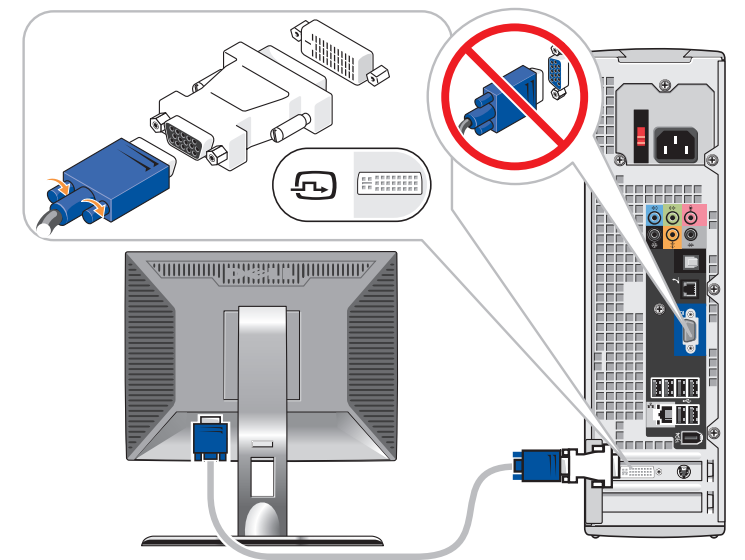
**1** Attach the clear self-adhesive rubber pads.



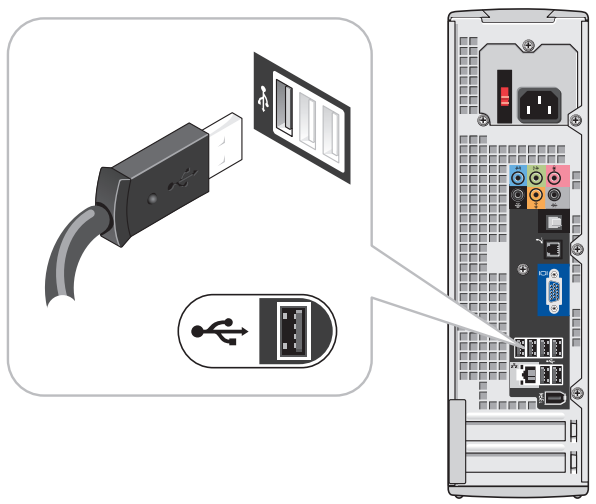
OR



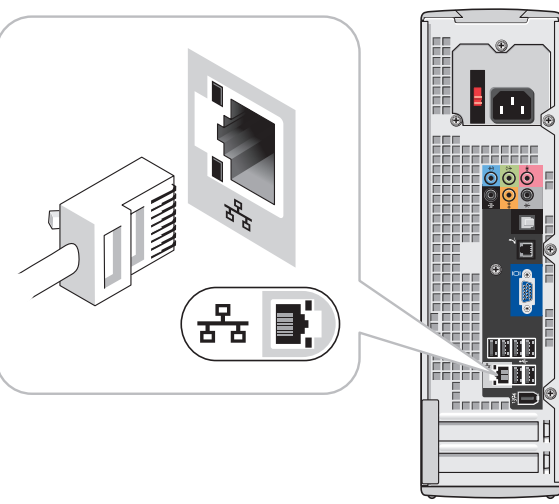
OR



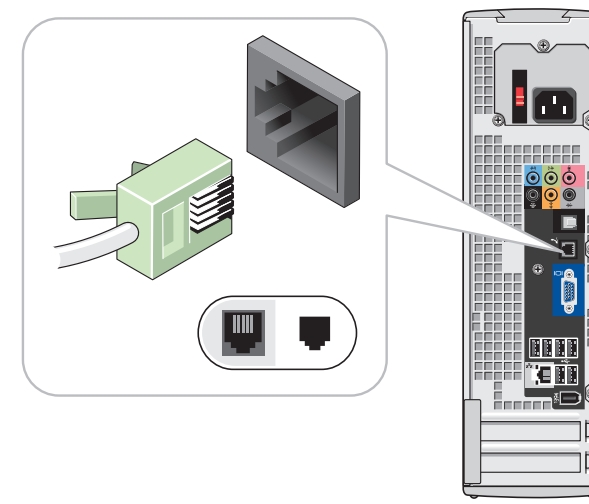
**2** Connect the monitor using EITHER the white DVI cable OR the blue VGA cable (DO NOT connect both cables to the same computer).



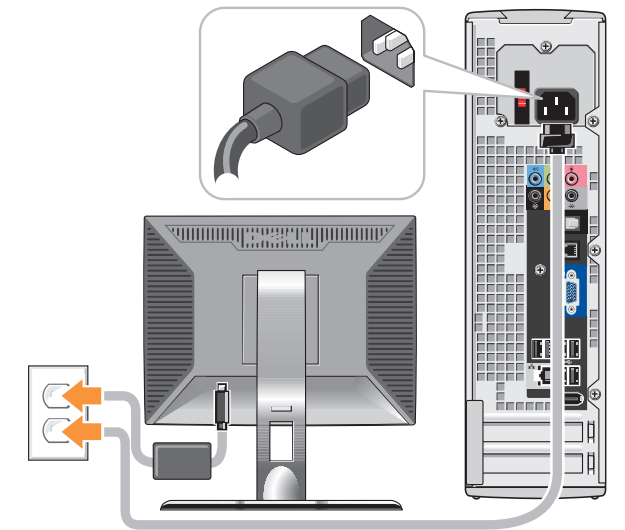
**3** Connect the keyboard and mouse.



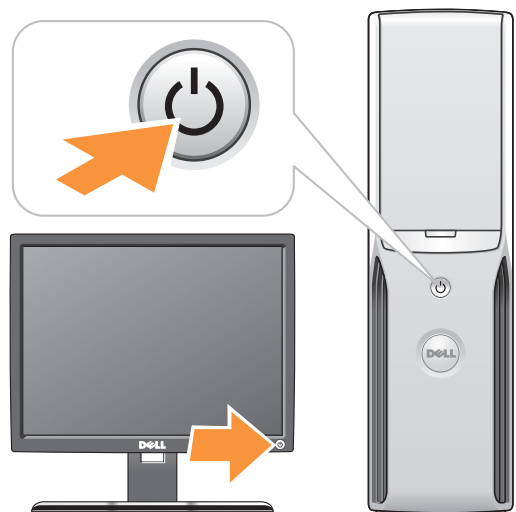
**4** Connect the network (cable not included).



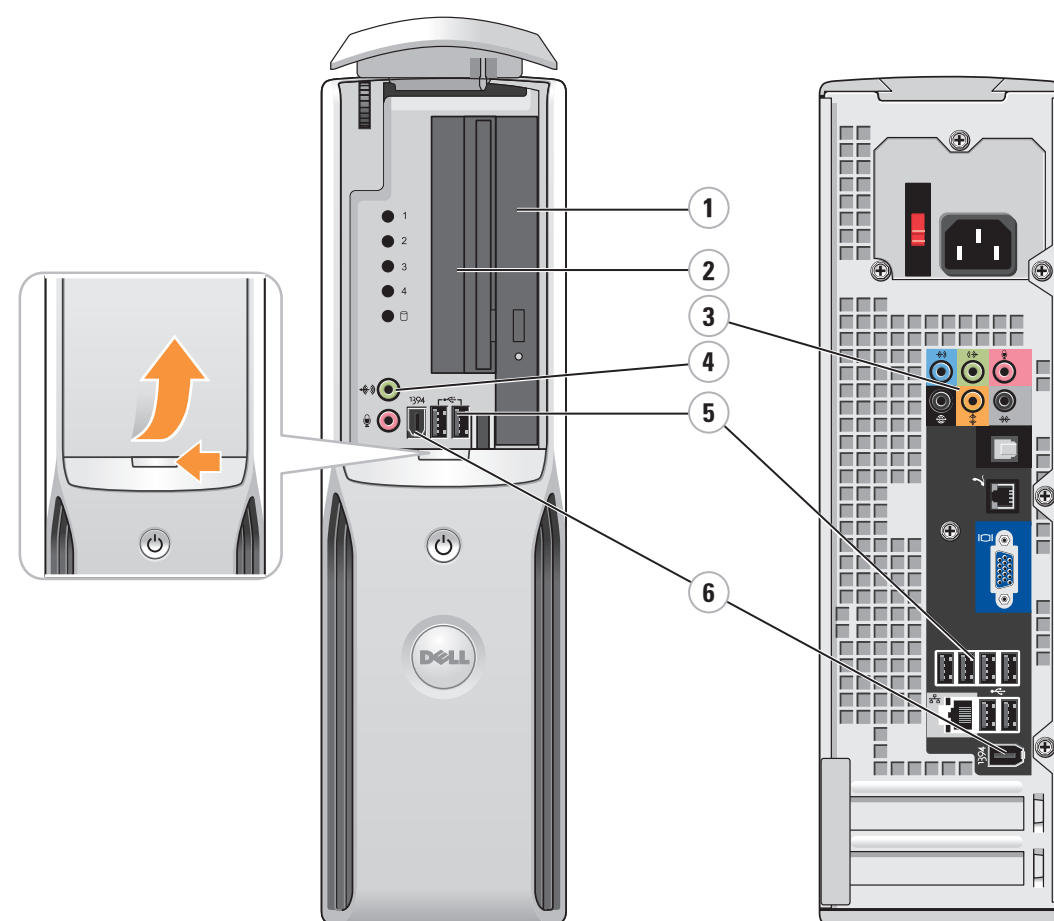
**5** Connect the modem (telephone cable not included).



**6** Connect the power cables.



**7** Press the power buttons.

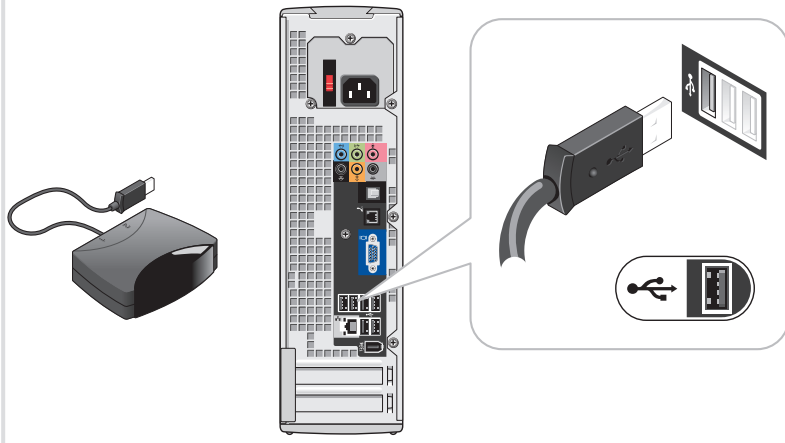


**System Features**

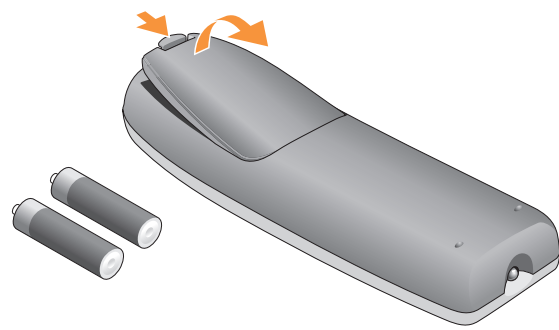
- 1. CD or DVD drive
- 2. floppy drive (optional) or Media Card Reader (optional)
- 3. audio connectors
- 4. headphone connector
- 5. USB 2.0 connectors
- 6. IEEE 1394 connectors



# What's Next?



**8** | Connect the sensor for the optional remote control.



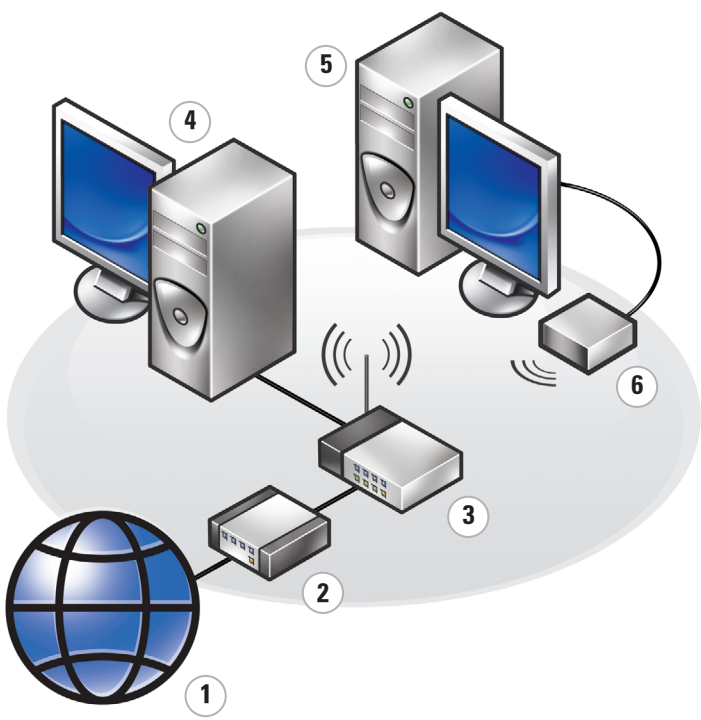
**9** | Install the batteries into the optional remote control.



**10** | Launch the optional Media Center operating system.



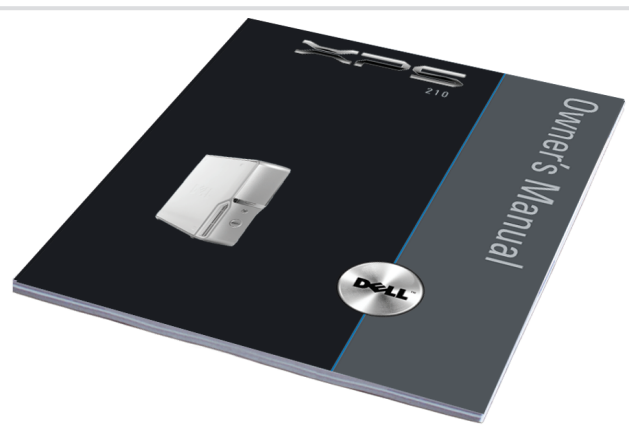
**11** | See Media Center setup for optional TV tuner card.



### Wireless Network (Optional)

1. Internet service
2. Cable or DSL modem
3. Wireless router
4. Desktop computer with network adapter
5. Desktop computer with USB wireless adapter
6. USB wireless adapter

See your computer or router's documentation for more information on how to set up and use your wireless network.



### Finding Answers

For additional information about:

- Setup instructions, see your *Owner's Manual*.
- Your computer, click **Start**, then click **Help and Support**.

Support and educational tools are available at [support.dell.com](http://support.dell.com).

Information in this document is subject to change without notice.  
© 2006 Dell Inc. All rights reserved.

Reproduction in any manner whatsoever without the written permission of Dell Inc. is strictly forbidden.

Dell, the Dell logo, and XPS are trademarks of Dell Inc.; Microsoft and Windows are registered trademarks of Microsoft Corporation. Dell disclaims proprietary interest in the marks and names of others.

July 2006



0CJ788A00



Printed in the U.S.A.

[www.dell.com](http://www.dell.com) | [support.dell.com](http://support.dell.com)

